

AANBOD

■ Het Kasteel - Appartement 3.3 duplex

Vloeroppervlakte: 134,3 m²

Terras: 16,2 m²

1. Inkom

2. Toilet

3. Eetruimte

4. Leefruimte

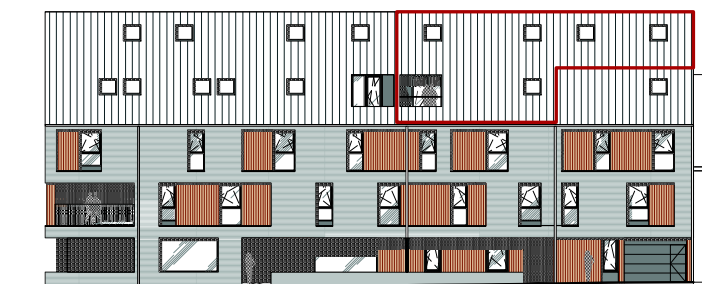
5. Keuken

6. Berging

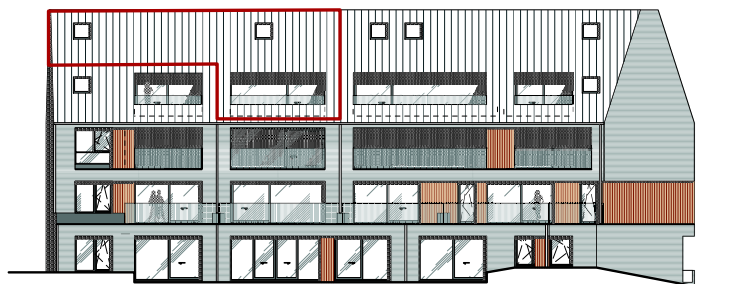
7. Slaapkamer

8. Badkamer

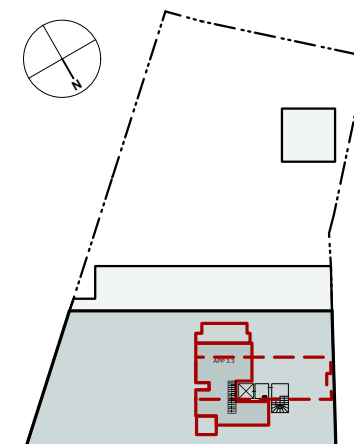
9. Terras



Voorgevel



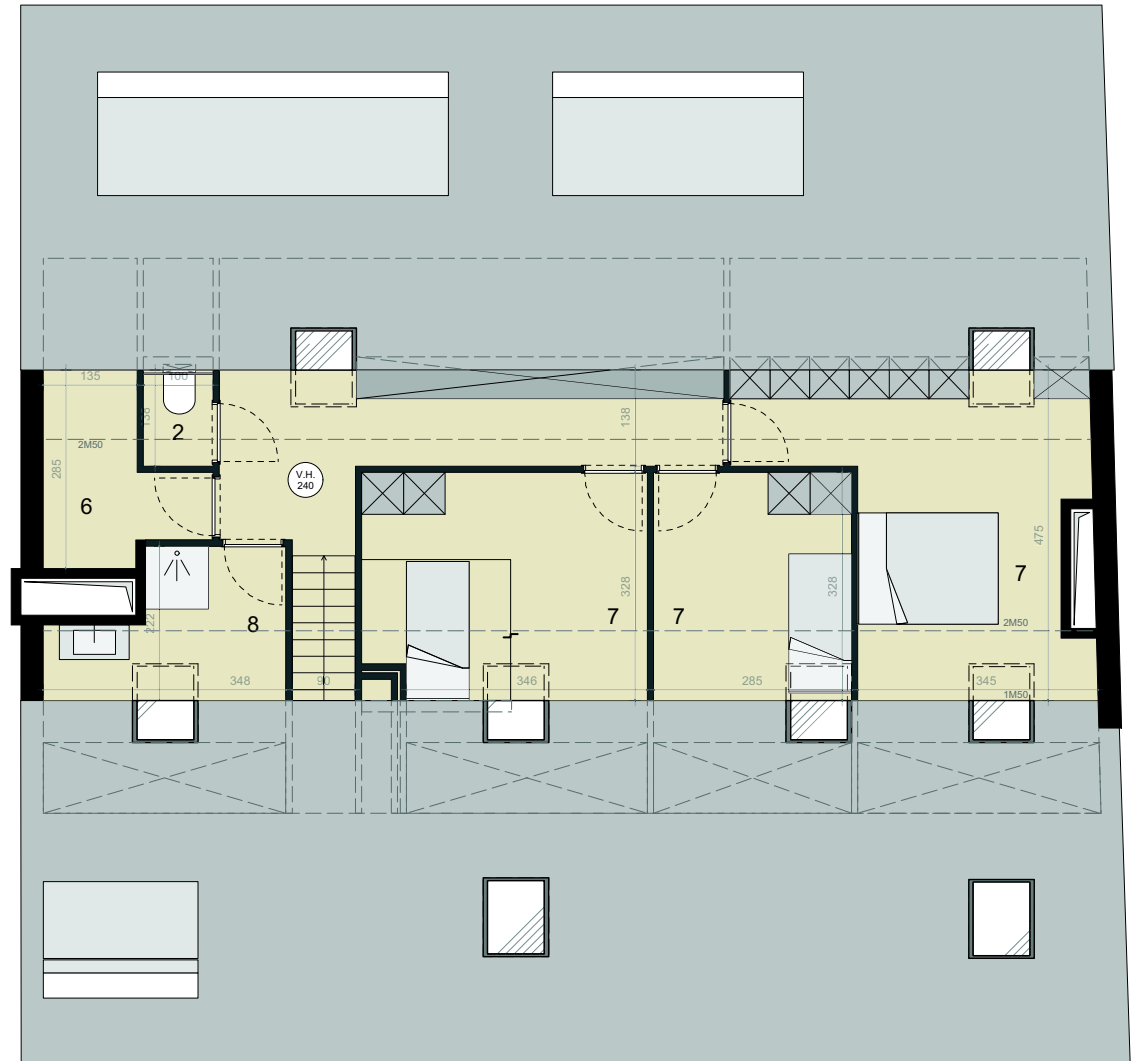
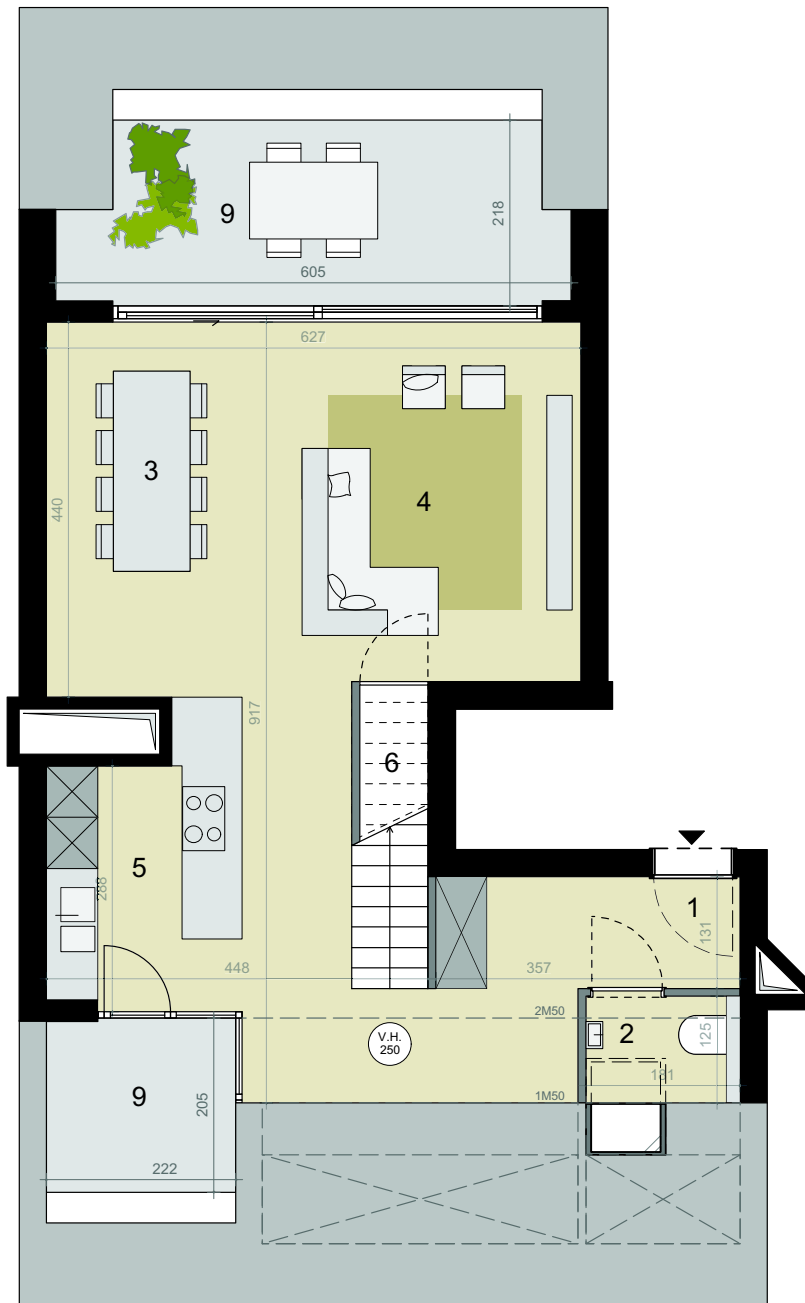
Achtergevel



Stationsstraat

Residentie Het Kasteel

WOLVERTEM



■ Appartement 3.3 duplex